



HOVDE FOUNDATION

2013 ANNUAL REPORT

Building hope.
Bringing change.
Loving the world's most
vulnerable children.

HOVDEFUNDATION.ORG





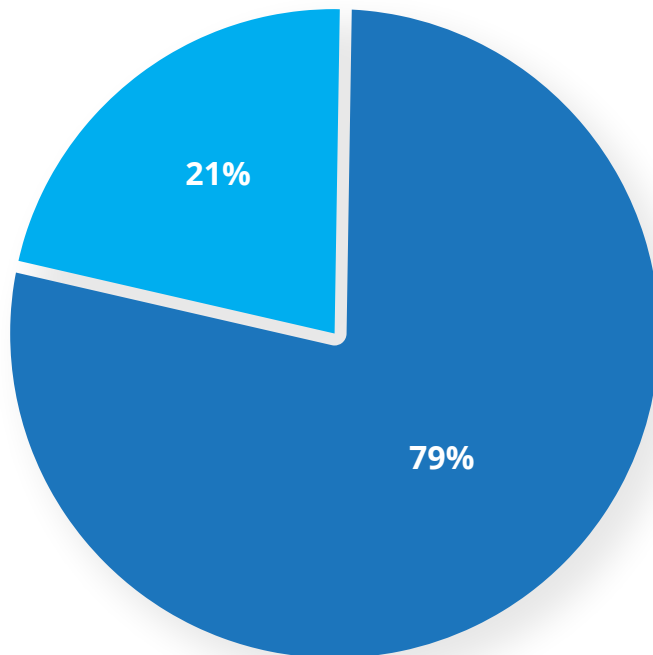
MISSION & VISION

- Building Hovde Homes - shelters for vulnerable children
- Funding research towards a cure for multiple sclerosis

There is nothing more beautiful than the smile of a child who knows he is safe, valued, and loved. Our vision is to restore vulnerable children who have faced abuse and exploitation, so they can smile again.

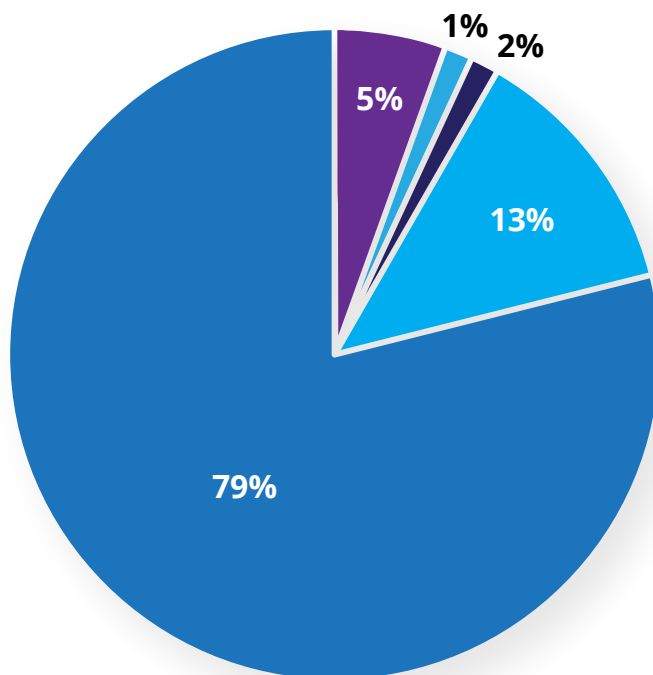
2013 GIVING SUMMARY

DONATIONS BY REGION



Domestic:	\$165,477.00
International:	\$612,380.08
Total:	\$777,857.08

DONATIONS BY AREA OF FOCUS

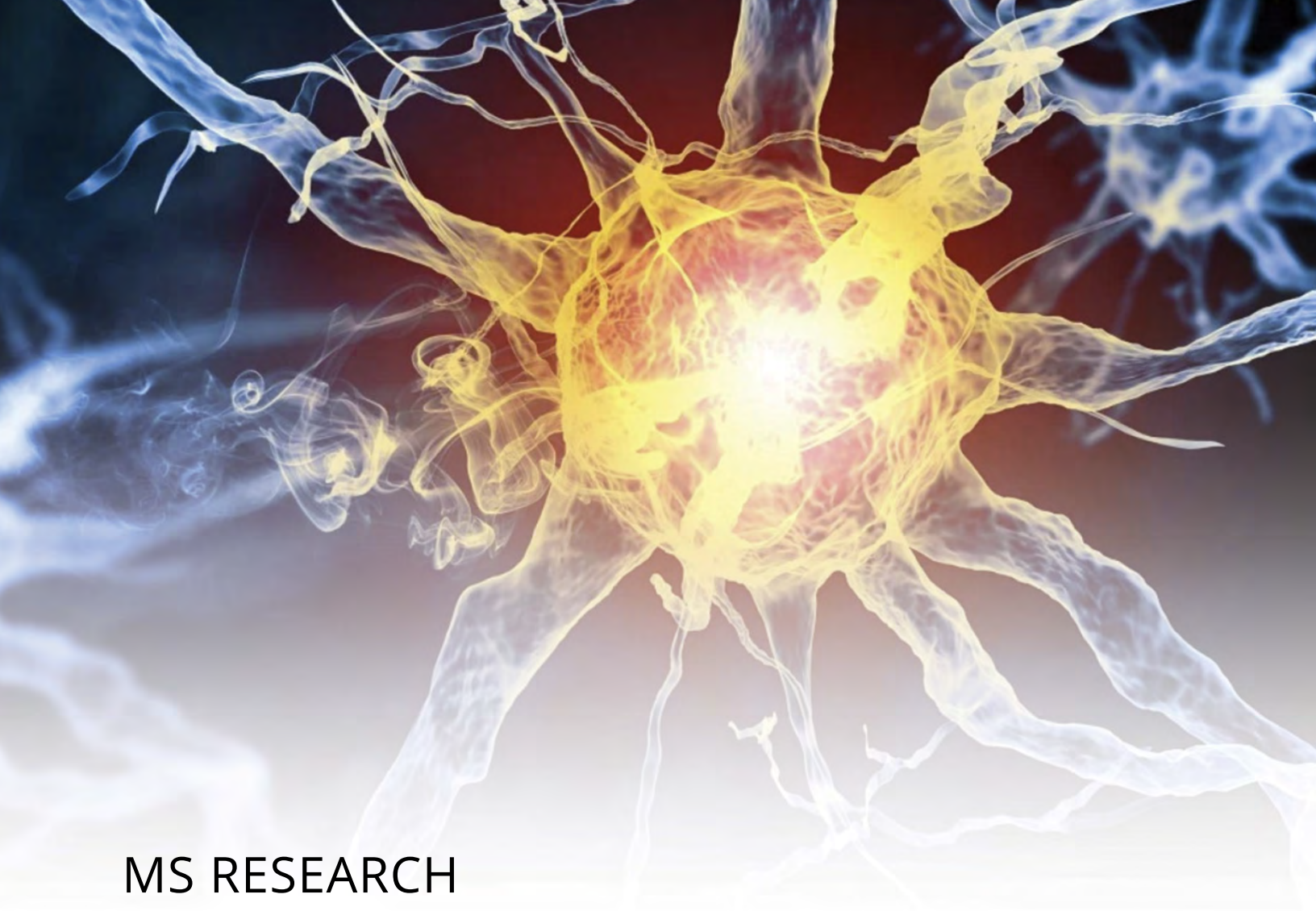


Community Development:	1%
Medical & Health:	2%
Housing & Hunger Relief:	5%
Youth Development & Education:	13%
Orphan Care:	79%

For 2013, the Hovde Foundation focused on the Hovde Homes Initiative with the addition of the Perry Hovde Home in Quetzaltenango, Guatemala.

2013 DOMESTIC GRANTS

A Child's Place	Camp for homeless children	Charlotte, NC
Boys & Girls Club of Dane County	Youth development programs	Madison, WI
Children's National Medical Center	General operations	Bethesda, MD
Children's Theatre of Madison	WI theatre program for low income children	Madison, WI
City Academy	School for underprivileged youth	St. Louis, MO
Campus Crusade for Christ	Relief work in disaster areas	Orlando, FL
Green Door	Support for people with mental illness	Washington DC
Most Valuable Kids	WI theatre program for low income children	Rockville, MD
National MS Society	Research for MS and support those living with disability	United States
Ronald McDonald House of New York	WI theatre program for low income children	New York City, NY
SeriousFun Children's Network	Camp for sick children	United States
The Road Home Dane County	Housing for homeless families	Madison, WI



MS RESEARCH

One of the founding objectives of the Hovde Foundation is funding research towards the cure for Multiple Sclerosis (MS). This debilitating disease currently affects well over 400,000 Americans and [conservatively estimated] 2.5 million people worldwide. Diagnosed with the disease in 1991, Eric Hovde was driven to join the fight against MS.

For more than 19 years, Eric Hovde has not only given financial resources to fighting MS, but has also served in leadership positions on the board of directors of several MS-related organizations, such as the National MS Society, MS International Federation, and The Myelin Project.

Through the foundation and personal contributions, Eric Hovde & Steve Hovde have supported Multiple Sclerosis research efforts totaling more than \$2 million since 1995 and will keep giving until a cure is found.

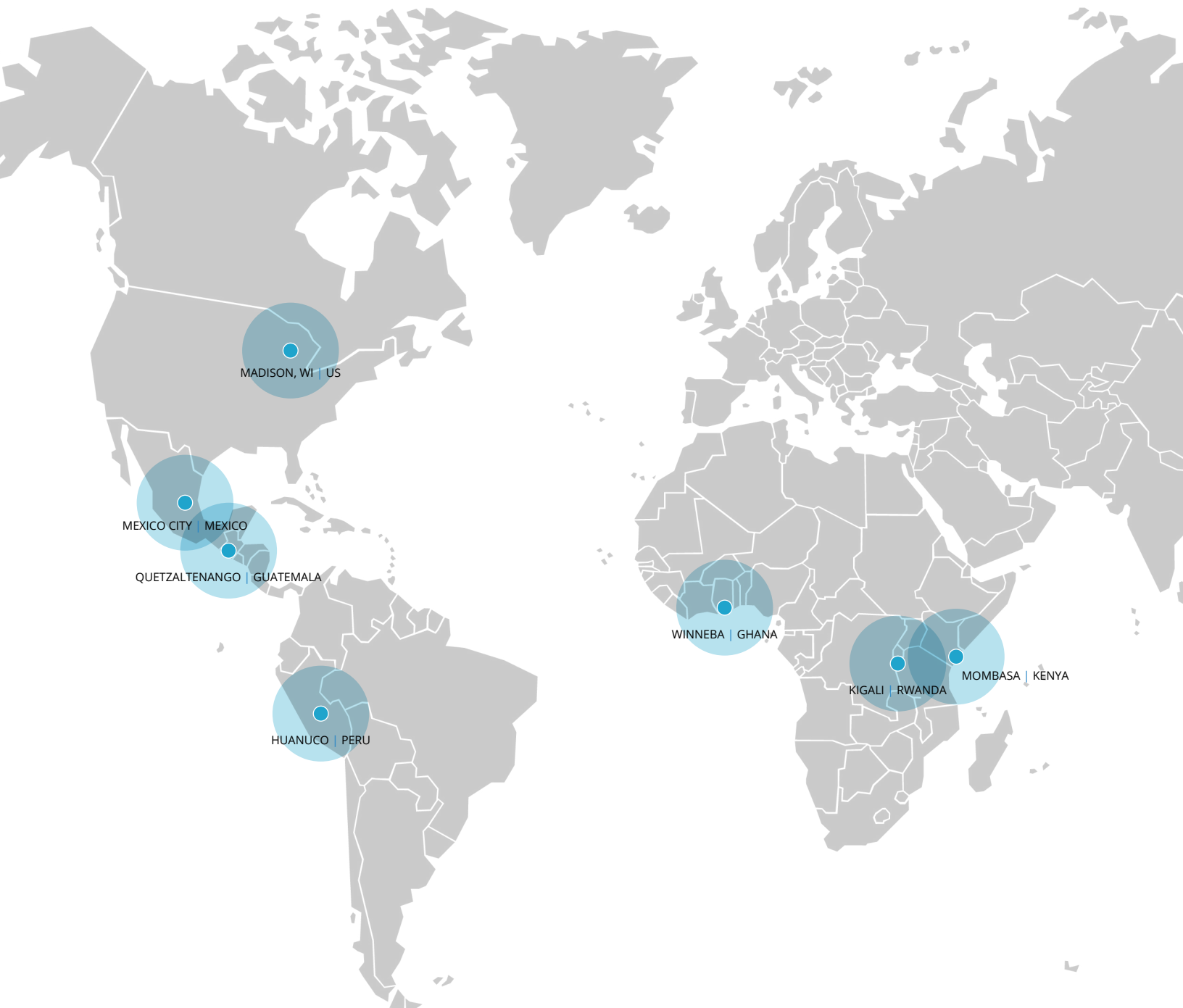


HOVDE HOME INITIATIVE

The focus of the Hovde Homes is to provide shelter, health, community development, and youth education to children in crisis. To date, there are seven Hovde Homes in Madison, WI, Mexico, Peru, Guatemala, Rwanda, Kenya, and Ghana.

With average capacity of 40-50 children, each home is operated by a carefully-selected local partner with professional experience providing appropriate cultural, physical, and psychological care for children in their community.

WHERE WE WORK



NORTH AMERICA

- Madison | WI
- Mexico City | Mexico

CENTRAL AMERICA

- Quetzaltenango | Guatemala

NEW

SOUTH AMERICA

- Huanuco | Peru

AFRICA

- Kigali | Rwanda
- Mombasa | Kenya
- Winneba | Ghana



NEW PERRY HOVDE HOME GUATEMALA

**Quetzaltenango, Guatemala | Operated by EDELAC |
Opened this year**

EDELAC (Escuela De La Calle) was founded in 1995 to help street children in the central park of Quetzaltenango, Guatemala by Guadalupe Pos, providing educational assistance, medical attention, and resolution of family issues that led them to the street in the first place.

EDELAC partnered with the Hovde Foundation in 2012 to purchase and upgrade a new home to care for the children who have nowhere else to go. On April of this year, a second floor was added and the home is able to support up to 26 children and space to accommodate volunteers.

The Perry Hovde Home was named in honor of Richard J. Perry, a lifelong advocate for the vulnerable and needy who generously financed the home through a donation to the Hovde Foundation.

[Learn more at www.edelac.org](http://www.edelac.org)





HOVDE HOME GHANA

Winneba, Ghana | Operated by Challenging Heights | Opened in 2011

The Challenging Heights Hovde Home serves as a shelter for 60 former child slaves. The Hovde Home is the first point of refuge for rescued children, offering a transitional home for holistic rehabilitation, survivor support, and aftercare.

Learn more at www.challengingheights.org

BY THE NUMBERS

Avg. children at Hovde Home:	21
Avg. children admitted:	43
Reintegrated into society:	43



HOVDE HOME KENYA

Mombasa, Kenya | Operated by Mudzini Kwetu | Opened in 2011

This Hovde Home is able to accommodate up to 60 abandoned girls ages 3 months to 18 years old. The project is a pioneer in sustainability as its electricity is primarily solar, its water comes from their own well, and its farm and tilapia ponds provide food for the children and contributes to the operational costs of the home.

Learn more at www.manyhopes.org

BY THE NUMBERS

Children at Hovde Home:	46
Children receiving education*:	37

** Nine of the forty six children living at the Hovde Home are too young to go to school.*



SWANSON HOVDE HOME

Kigali, Rwanda | Operated by Hope For Life Ministry | Opened in 2011

In partnership with Rwanda-based NGO, Hope For Life Ministry, the Swanson Hovde Home currently houses and cares for 25 boys, all formerly living on the streets of Kigali. Hope For Life Ministry focuses on holistic and long-term care that equips the boys to stay off the street by attending school and vocational training.

[Learn more at hopeforlife.us](http://hopeforlife.us)

BY THE NUMBERS

Avg. children at Hovde Home:	28
New children admitted:	13
Children reintegrated into society:	4



CASA DEL BUEN TRATO PERU

Huanuco, Peru | Operated by Paz y Esperanza | Opened in 2010

The Casa del Buen Trato Hovde (The Hovde Home of Good Treatment) is a refuge and transitional home for children and youth who have suffered sexual and physical abuse. The Hovde Home provides temporary shelter, rehabilitation programs, and reintegration services to 50 children and adolescent mothers at a time.

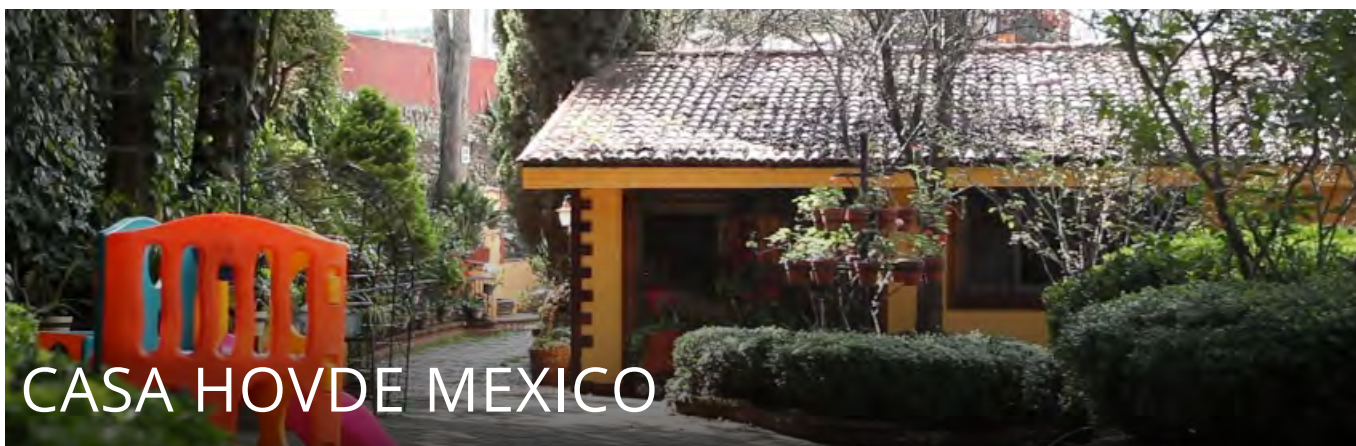
[Learn more at www.casadelbuentrato.org](http://www.casadelbuentrato.org)



Madison, WI | Operated by The Road Home | Opened in 2010

In 2009, The Road Home Dane County launched their Housing & Hope program, a scattered-site affordable housing initiative, to which the Hovde Foundation is proud to be a major contributor. This innovative project provides long-term support services for homeless families in Madison, Wisconsin.

[Learn more at www.trhome.org](http://www.trhome.org)



Mexico City, Mexico | Operated by Ministerios de Amor Opened in 2006

Casa Hovde opened its doors in 2006, providing permanent housing for neglected street children. Since July 2012, the home is run by Mexican NGO, Ministerios de Amor, and cares for 55 girls, ages 6-16 who were formerly living on the streets.

[Learn more at ministeriosdeamor.org.mx](http://ministeriosdeamor.org.mx)

BY THE NUMBERS

Avg. children at Hovde Home:	43
New children admitted:	6
Children reintegrated into society:	5



Swanson Hovde Home | Hope For Life Ministry | Rwanda

HOVDEFUNDATION.ORG

608-255-5175 | 122 W. WASHINGTON AVE, SUITE 350, MADISON, WI 53703

