



HOVDE FOUNDATION

2015 ANNUAL REPORT

Building hope.
Bringing change.
Loving the world's most
vulnerable children.

HOVDEFUNDATION.ORG





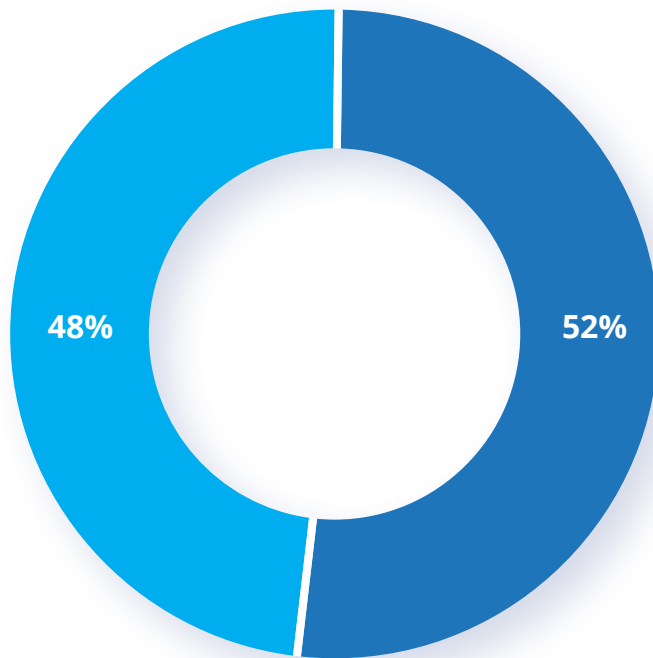
MISSION & VISION

- Building Hovde Homes - shelters for vulnerable children
- Funding research towards a cure for multiple sclerosis

There is nothing more beautiful than the smile of a child who knows he is safe, valued, and loved. Our vision is to restore vulnerable children who have faced abuse and exploitation, so they can smile again.

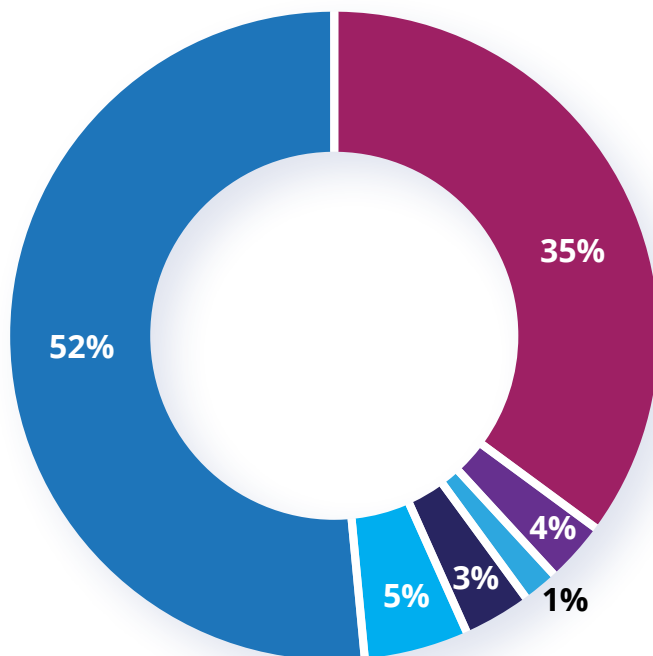
2015 GIVING SUMMARY

DONATIONS BY REGION



Domestic:	\$347,410.81
International:	\$369,208.87
Total:	\$716,619.68

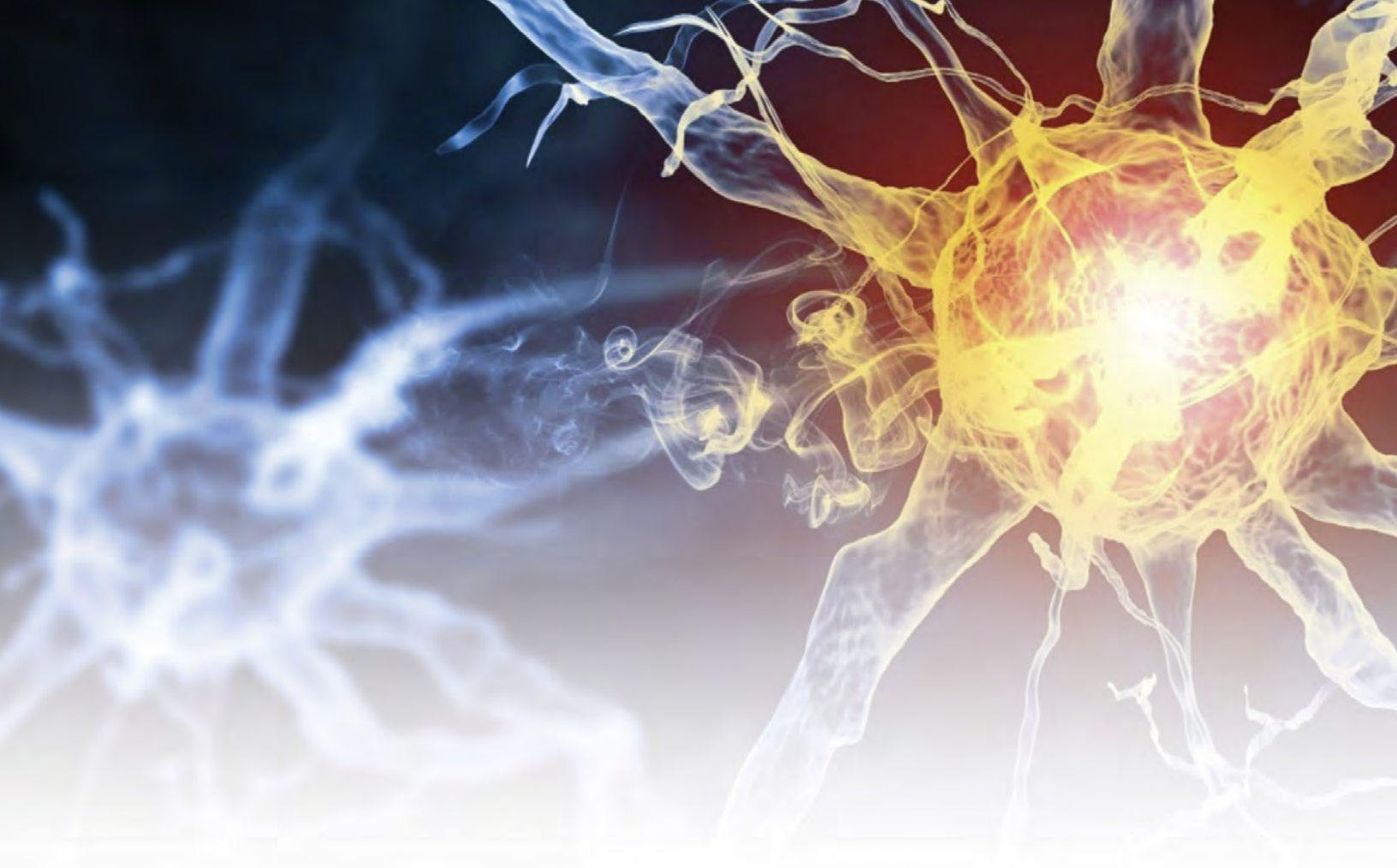
DONATIONS BY AREA OF FOCUS



Community Development:	1%
Medical & Health:	3%
Youth Development & Education:	5%
Housing & Hunger Relief:	4%
MS Research:	35%
Orphan Care:	52%

2015 DOMESTIC GRANTS

A Child's Place	Camp for homeless children	Charlotte, NC
Aaron J. Meyer Foundation	Madison collegiate recovery housing consortium	Washington, DC
Boys & Girls Club of Dane County	Youth development programs	Madison, WI
Children's Theatre of Madison	WI theatre program for low income children	Madison, WI
Clean Lakes Alliance	Environmental improvement to Madison's lakes	Madison, WI
Junior Achievement of Wisconsin	Financial literacy program for local children	Madison, WI
Junior Diabetes Research Foundation	Research to cure type 1 diabetes	Madison, WI
Madison Children's Museum	General operations	Madison, WI
National MS Society	Research for MS and support those living with disability	United States
SeriousFun Children's Network	Camp for sick children	Westport, CT
The River Food Pantry	Hot meals, groceries, clothing and household items to low income families	Madison, WI
The Road Home Dane County	Housing for homeless families	Madison, WI
Worldwide Foundation for Credit Unions	Shelter and food program for Kenyan orphanage	Madison, WI



MULTIPLE SCLEROSIS RESEARCH

One of the founding objectives of the Hovde Foundation is funding research towards the cure for Multiple Sclerosis (MS). This debilitating disease currently affects well over 400,000 Americans and [conservatively estimated] 2.5 million people worldwide. Diagnosed with the disease in 1991, Eric Hovde was driven to join the fight against MS.

For more than 21 years, Eric Hovde has not only given financial resources to fighting MS, but has also served in leadership positions on the board of directors of several MS-related organizations, such as the National MS Society, MS International Federation, and The Myelin Project.

Through the foundation and personal contributions, Eric Hovde & Steve Hovde have supported Multiple Sclerosis research efforts totaling more than \$2 million since 1995 and will keep giving until a cure is found.

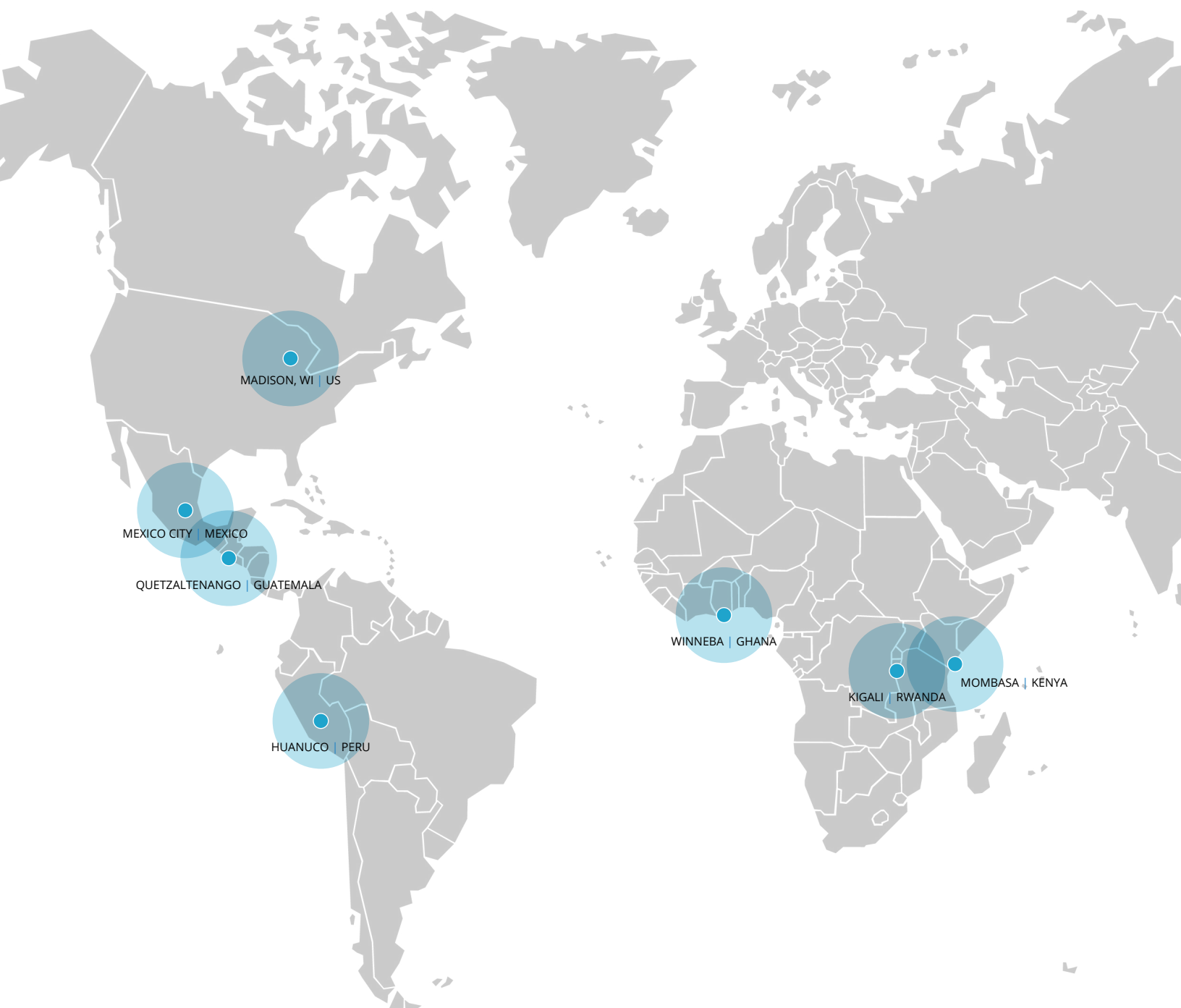


HOVDE HOME INITIATIVE

The focus of the Hovde Homes is to provide shelter, health, community development, and youth education to children in crisis. To date, there are seven Hovde Homes in Madison, WI, Mexico, Peru, Guatemala, Rwanda, Kenya, and Ghana.

With average capacity of 40-50 children, each home is operated by a carefully-selected local partner with professional experience providing appropriate cultural, physical, and psychological care for children in their community.

WHERE WE WORK



NORTH AMERICA

- Madison, WI | US
- Mexico City | Mexico

CENTRAL AMERICA

- Quetzaltenango | Guatemala

SOUTH AMERICA

- Huanuco | Peru

AFRICA

- Kigali | Rwanda
- Mombasa | Kenya
- Winneba | Ghana



Quetzaltenango, Guatemala | Operated by EDELAC | Opened in 2013

In partnership with local NGO, EDELAC, The Perry Hovde Home opened its doors on April 2013 providing shelter, educational assistance, medical attention, and resolution of family issues to children that live on the streets of Quetzaltenango, Guatemala. It is able to support up to 26 children with extra space to accommodate volunteers.

[Learn more at www.edelac.org](http://www.edelac.org)



Winneba, Ghana | Operated by Challenging Heights | Opened in 2011

The Challenging Heights Hovde Home serves as a shelter for 60 former child slaves. The Hovde Home is the first point of refuge for rescued children, offering a transitional home for holistic rehabilitation, survivor support, and aftercare.

[Learn more at www.challengingheights.org](http://www.challengingheights.org)

2015 BY THE NUMBERS

Avg. children at Hovde Home:	38
Avg. children admitted:	43
Reintegrated into society:	64



Mombasa, Kenya | Operated by Mudzini Kwetu | Opened in 2011

This Hovde Home is able to accommodate up to 60 abandoned girls ages 3 months to 18 years old. The project is a pioneer in sustainability as its electricity is primarily solar, its water comes from their own well, and its farm and tilapia ponds provide food for the children and contributes to the operational costs of the home.

Learn more at www.manyhopes.org

2015 BY THE NUMBERS

Children at Hovde Home:	57
Children receiving education:	57
Hours of emotional healing:	540



Kigali, Rwanda | Operated by Hope For Life Ministry | Opened in 2011

In partnership with Rwanda-based NGO, Hope For Life Ministry, the Swanson Hovde Home currently houses and cares for 25 boys, all formerly living on the streets of Kigali. Hope For Life Ministry focuses on holistic and long-term care that equips the boys to stay off the street by attending school and vocational training.

Learn more at hopeforlife.us

2015 BY THE NUMBERS

Avg. Children at Hovde Home:	25
New children admitted:	7
Reintegrated into society:	4
Children served:	54



CASA DEL BUEN TRATO PERU

Huanuco, Peru | Operated by Paz y Esperanza | Opened in 2010

The Casa del Buen Trato Hovde (The Hovde Home of Good Treatment) is a refuge and transitional home for children and youth who have suffered sexual and physical abuse. The Hovde Home provides temporary shelter, rehabilitation programs, and reintegration services to 50 children and adolescent mothers at a time.

Learn more at www.casadelbuentrato.org

2015 BY THE NUMBERS

Avg. Children at Hovde Home:	41
New children admitted:	10
Reintegrated into society:	19



HOVDE HOME WISCONSIN

Madison, WI | Operated by The Road Home | Opened in 2010

In 2009, The Road Home Dane County launched their Housing & Hope program, a scattered-site affordable housing initiative, to which the Hovde Foundation is proud to be a major contributor. This innovative project provides long-term support services for homeless families in Madison, Wisconsin.

Learn more at www.trhome.org



Mexico City, Mexico | Operated by Ministerios de Amor Opened in 2006

Casa Hovde opened its doors in 2006, providing permanent housing for neglected street children. From 2012 to 2015, the home was managed by Mexican NGO, Ministerios de Amor. During this time, permanent housing has been provided for 55 girls, ages 6-16 who were formerly living on the streets.

Currently, Casa Hovde México is undergoing exciting structural updates and the program will reopen soon under new management.



Casa Del Buen Trato Hovde | Paz y Esperanza | Peru

HOVDEFUNDATION.ORG

608-255-5175 | 122 W. WASHINGTON AVE, SUITE 350, MADISON, WI 53703

