



2019

ERIC D. & STEVE D. HOVDE FOUNDATION
ANNUAL REPORT

Building hope. Bringing change.
Loving the world's most vulnerable children.







MISSION

- To nurture vulnerable children who have faced abuse, abandonment and exploitation.
- To further research of a cure for Multiple Sclerosis.

VISION

There is nothing more beautiful than the smile of a child who knows he is safe, valued, and loved.

We envision a world in which all children can smile again.

2019 IMPACT HIGHLIGHTS

+ \$730K
Invested

10
Countries

10
Completed
Hovde Homes

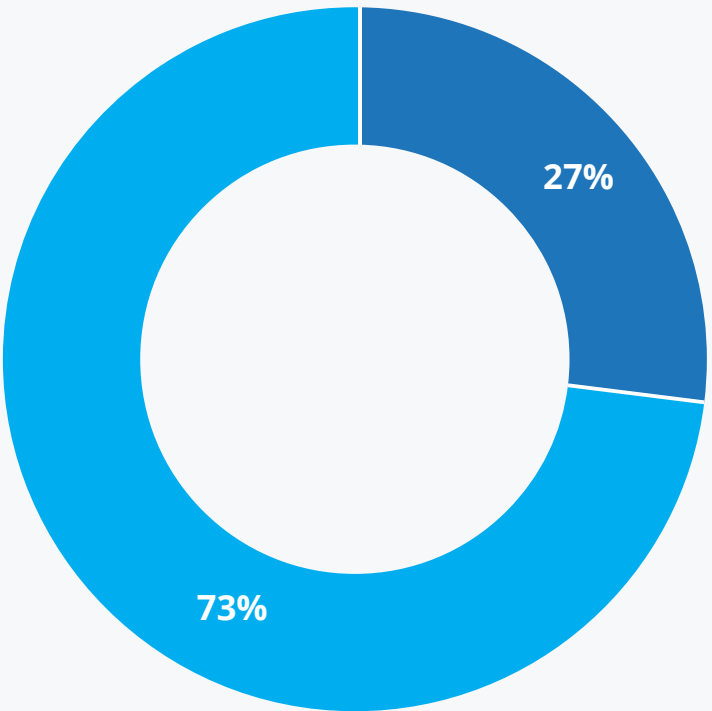
25
Grantee Partners

+500
Children a year
served thorough
the Hovde Homes
Initiative

2
New Hovde Home
openings in Bolivia &
Honduras

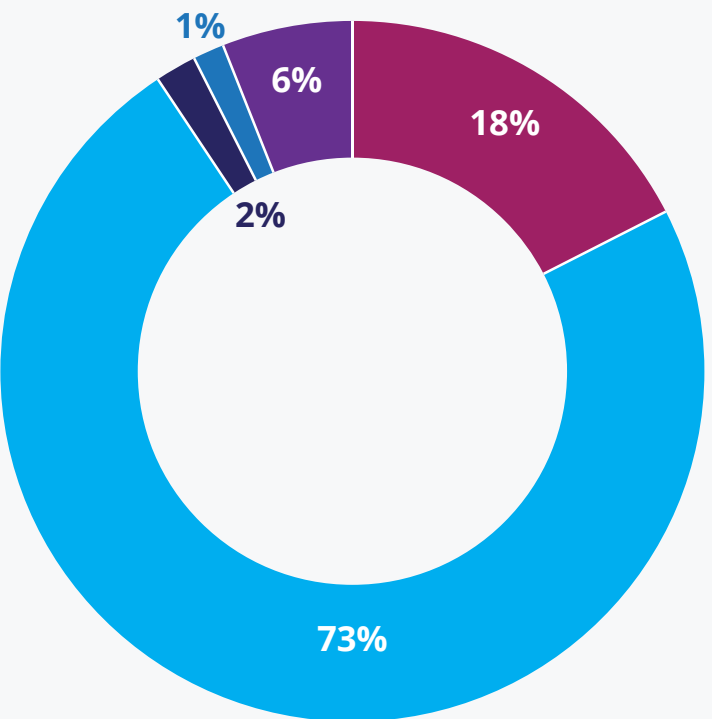


DONATIONS BY REGION



Domestic:	\$197,368.00 (27%)
International:	\$541,429.00 (73%)
Total:	\$738,797.00

DONATIONS BY AREA OF FOCUS



Youth Development & Education:	1%
Medical & Health:	2%
Housing & Hunger Relief:	6%
Community Development:	18%
Orphan Care:	73%

2019 DOMESTIC GRANTS

A Child's Place	Housing & Hunger Relief	General
Bethel Horizons	Community Development	Wisconsin
Care Net Pregnancy Center	Community Development	Wisconsin
Children's Dyslexia Center - Madison	Medical/Health	Wisconsin
Clean Lakes Alliance	Community Development	Wisconsin
Goodman Center/Girls Inc	Youth Development/Education	Wisconsin
Horizon High School	Youth Development/Education	Wisconsin
Madison Reading Project	Youth Development/Education	Wisconsin
Madison Symphony Orchestra League	Community Development	Wisconsin
Prostate Cancer Foundation	Medical/Health	General
Safe Community Coalition of Madison	Community Development	Wisconsin
The River Food Pantry	Housing & Hunger Relief	Wisconsin
The Road Home of Dane County	Housing & Hunger Relief	Wisconsin
THORN	Community Development	General
Wisconsin Family Ties, Inc.	Medical/Health	Wisconsin
Working Capital for Community Needs, Inc.	Community Development	Wisconsin

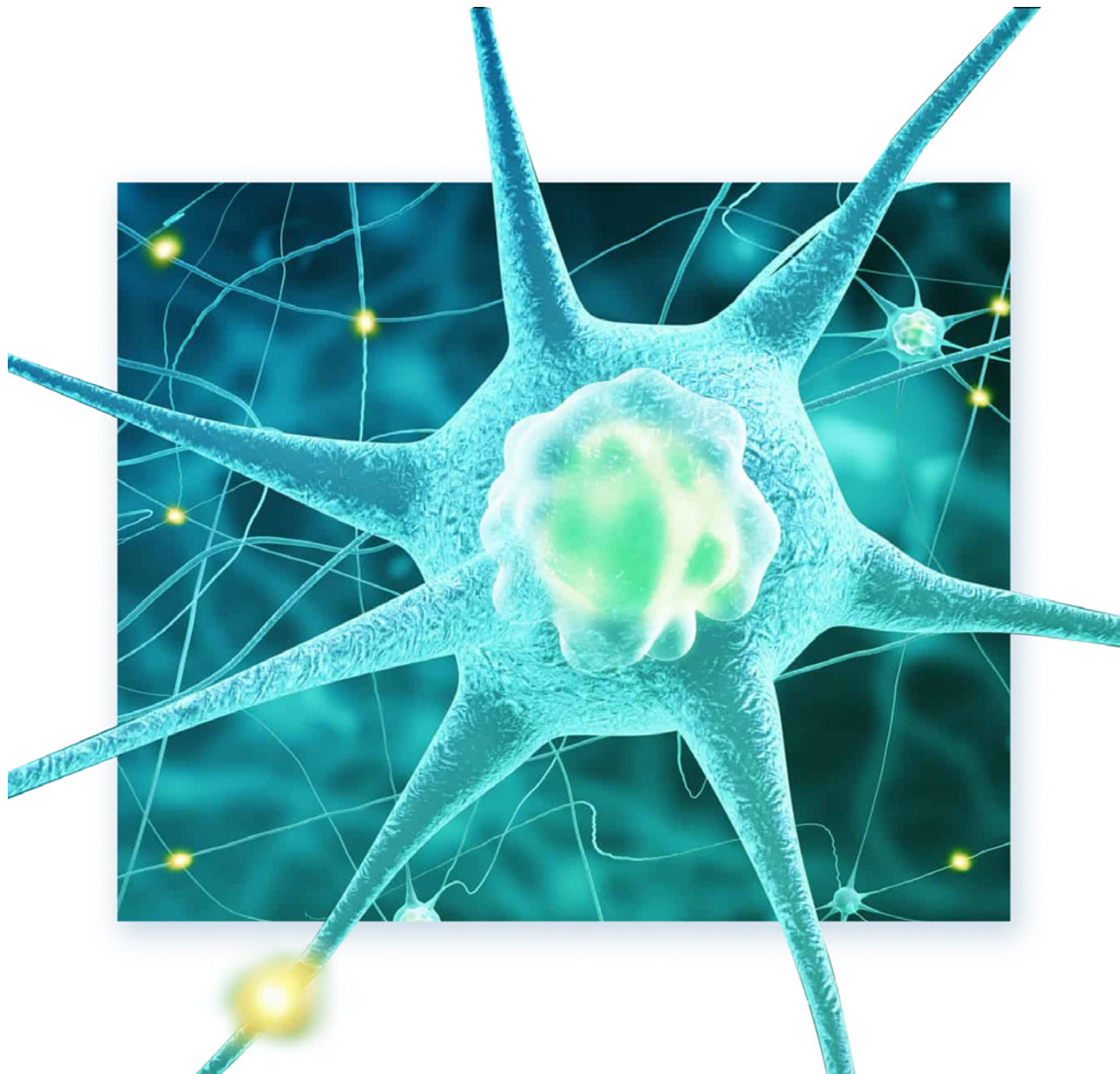


MULTIPLE SCLEROSIS RESEARCH

One of the founding objectives of the Hovde Foundation is funding research towards the cure for Multiple Sclerosis (MS). This debilitating disease currently affects well over 400,000 Americans and [conservatively estimated] 2.5 million people worldwide. Diagnosed with the disease in 1991, Eric Hovde was driven to join the fight against MS.

For more than 25 years, Eric Hovde has not only given financial resources to fighting MS, but has also served in leadership positions on the board of directors of several MS-related organizations, such as the National MS Society, MS International Federation, and The Myelin Project.

Through the foundation and personal contributions, Eric Hovde & Steve Hovde have supported Multiple Sclerosis research efforts totaling more than \$2 million since 1995 and will keep giving until a cure is found.



HOVDE HOME INITIATIVE

The focus of the Hovde Homes is to provide shelter, health, community development, and youth education to children in crisis. To date, there are ten completed Hovde Homes in Mexico, Ghana, Guatemala, Kenya, Malawi, Peru, Rwanda, Bolivia, Honduras, and Wisconsin, USA and one new home in progress in Costa Rica.

With average capacity of 40-50 children, each home is operated by a carefully-selected local partner with professional experience providing appropriate cultural, physical, and psychological care for children in their community.





NEW HONDURAS

HOVDE HOME HONDURAS
Santa Rosa de Copán, Honduras | Operated by Legacy of Hope |
Starting year: 2019

Founded in 2011, Legacy of Hope provides holistic care to orphans and abandoned children in Western Honduras. The organization operates several programs to address children’s needs including an emergency shelter for children who have been rescued from dangerous situations, a foster care home and placement agency for abandoned and at-risk children, and an elementary school for the children in their care.

Legacy of Hope and the Hovde Foundation partnered in 2017 to purchase and remodel two buildings to be used for the foster care program and emergency shelter. The two remodeled buildings make up the new Hovde Home in Santa Rosa de Copán, Honduras opening its doors to children coming from abandonment, family violence, and other dangerous situations.

Being the only resource of its kind in the area, they can now serve up to 40 children a day which doubles their housing capacity from previous years.

The Hovde Home opened in February of 2019.



2019 BY THE NUMBERS

Hovde Home capacity:	40 per day
Total children served:	125
Avg. amount of days staying at the Hovde Home:	24 days

For more information about Legacy Of Hope Foundation, go to legacyofhopefoundation.org



Casa Hovde: Marta Bedoya de Claire | Alalay Foundation

NEW BOLIVIA

CASA HOVDE: MARTA BEDOYA DE CLAURE
La Paz, Bolivia | Operated by Alalay | Starting year: 2019

Alalay was founded in 1990 through the initiative of Claudia Gonzales to get children off the streets and into a loving home. In Bolivia, approximately 7 of every 10 children are abused in their homes, schools, and places of work. With nowhere else to go, these children try to escape their situations by turning to the streets to fend for themselves. The name “Alalay” means “I feel cold” in Aymara and was chosen by the children to represent the countless nights spent outside in the cold.

In partnership with the Maestro Cares Foundation and Marta Bedoya de Claire Foundation, the Hovde Foundation is working with ALALAY to get children off the streets and into a loving home. Officially called “Casa Hovde: Marta Bedoya de Claire”, the Hovde Home benefits 30 young street girls that are victims of sex-trafficking, prostitution, and street violence. It is a transitional home and a place of refuge for the girls to recover from their trauma and lead healthy, happy lives.

The Casa Hovde: Marta Bedoya De Claire opened in February of 2019.



2019 BY THE NUMBERS

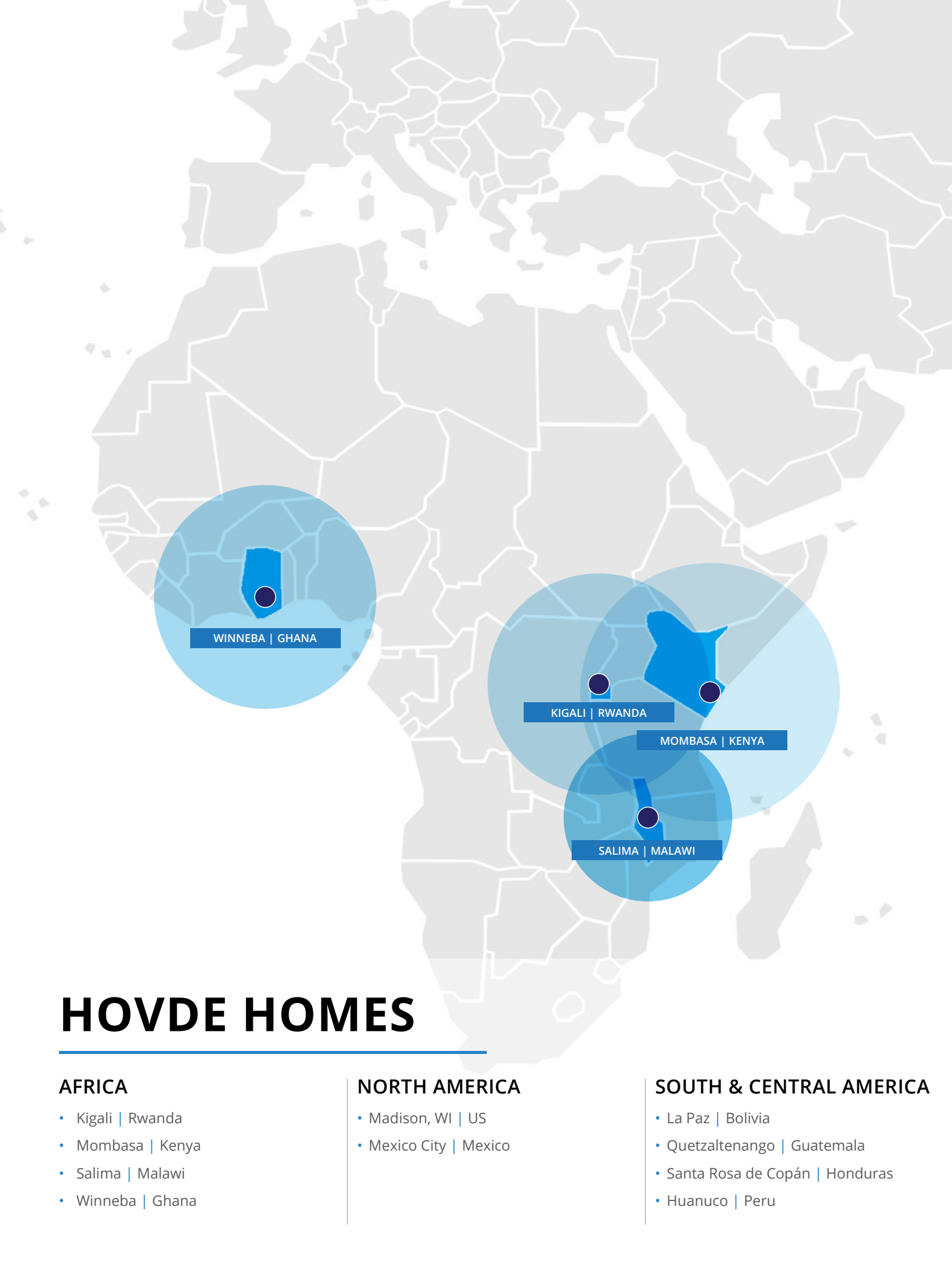
Hovde Home capacity:	30
Adolescents receiving education:	28
Legal representation to acquire legal identity:	25

For more information about Alalay Foundation, go to fundacionalalay.org





**THE HOVDE HOME INITIATIVE
PROVIDED HOUSING AND CARE TO
416+ CHILDREN IN 2019**



HOVDE HOMES

AFRICA

- Kigali | Rwanda
- Mombasa | Kenya
- Salima | Malawi
- Winneba | Ghana

NORTH AMERICA

- Madison, WI | US
- Mexico City | Mexico

SOUTH & CENTRAL AMERICA

- La Paz | Bolivia
- Quetzaltenango | Guatemala
- Santa Rosa de Copán | Honduras
- Huanuco | Peru



Hovde Home Honduras | Legacy Of Hope Foundation | Santa Rosa de Copán, Honduras

HOVDEFUNDATION.ORG

608-255-5175 | 122 W. WASHINGTON AVE, SUITE 350, MADISON, WI 53703

